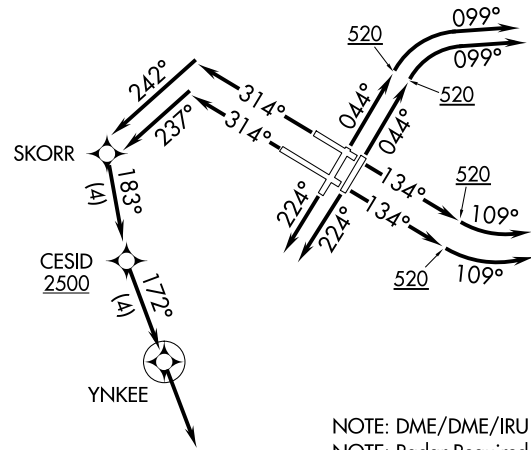
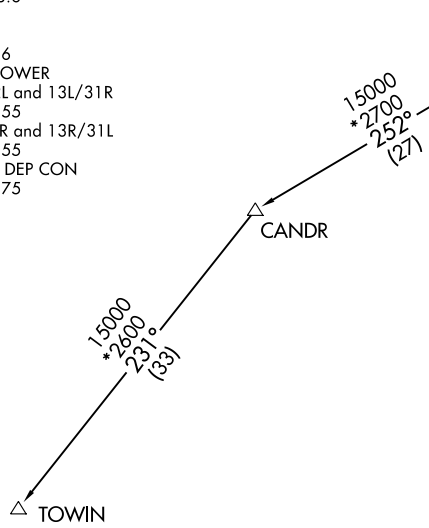
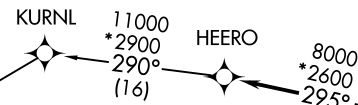
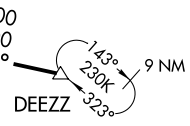


**TOP ALTITUDE:
5000**

(DEEZ5:DEEZ) 18200
DEEZ FIVE DEPARTURE (RNAV)

AL-610 (FAA)

JOHN F KENNEDY INTL (JFK)
NEW YORK, NEW YORK



D-ATIS
128.725
CLNC DEL
135.05 348.6
CPDLC
GND CON
121.9 348.6
KENNEDY TOWER
Rwys 4R/22L and 13L/31R
119.1 281.55
Rwys 4L/22R and 13R/31L
123.9 281.55
NEW YORK DEP CON
135.9 353.75

TAKEOFF MINIMUMS

Rwys 4L/R, 13L, 22L/R: Standard.
Rwy 13R: 300-1½ or Standard with minimum climb of 250' per NM to 300.
Rwys 31L/R: Standard with minimum climb of 500' per NM to 1400.

NOTE: DME/DME/IRU or GPS required.
NOTE: Radar Required.
NOTE: RNAV 1.
NOTE: TOWIN transition ATC assigned only.

NOTE: Chart not to scale.

(NARRATIVE ON FOLLOWING PAGE)

DEEZ FIVE DEPARTURE (RNAV)
(DEEZ5:DEEZ) 19JUL18

NEW YORK, NEW YORK
JOHN F KENNEDY INTL (JFK)

DEZZ FIVE DEPARTURE (RNAV)



DEPARTURE ROUTE DESCRIPTION

TAKEOFF RWYS 4L/R: Climb heading 044° to 520, then climbing right turn heading 099° or as assigned by ATC, thence

TAKEOFF RWYS 13L/R: Climb heading 134° to 520, then climbing left turn heading 109° or as assigned by ATC, thence

TAKEOFF RWYS 22L/R: Climb heading 224° or as assigned by ATC, thence

TAKEOFF RWY 31L: Climb heading 314° to intercept course 237° to SKORR, then on track 183° to cross CESID at or above 2500, then on track 172° to YNKKEE, then on heading 172° or as assigned by ATC, thence

TAKEOFF RWY 31R: Climb heading 314° to intercept course 242° to SKORR, then on track 183° to cross CESID at or above 2500, then on track 172° to YNKKEE, then on heading 172° or as assigned by ATC, thence

. . . . expect vectors to DEZZ, then on track 295° to HEERO. Maintain 5000. Expect clearance to filed altitude/flight level within ten (10) minutes after departure.

CANDR TRANSITION (DEZZ5.CANDR)

TOWIN TRANSITION (DEZZ5.TOWIN)

NE-2, 23 MAR 2023 to 20 APR 2023

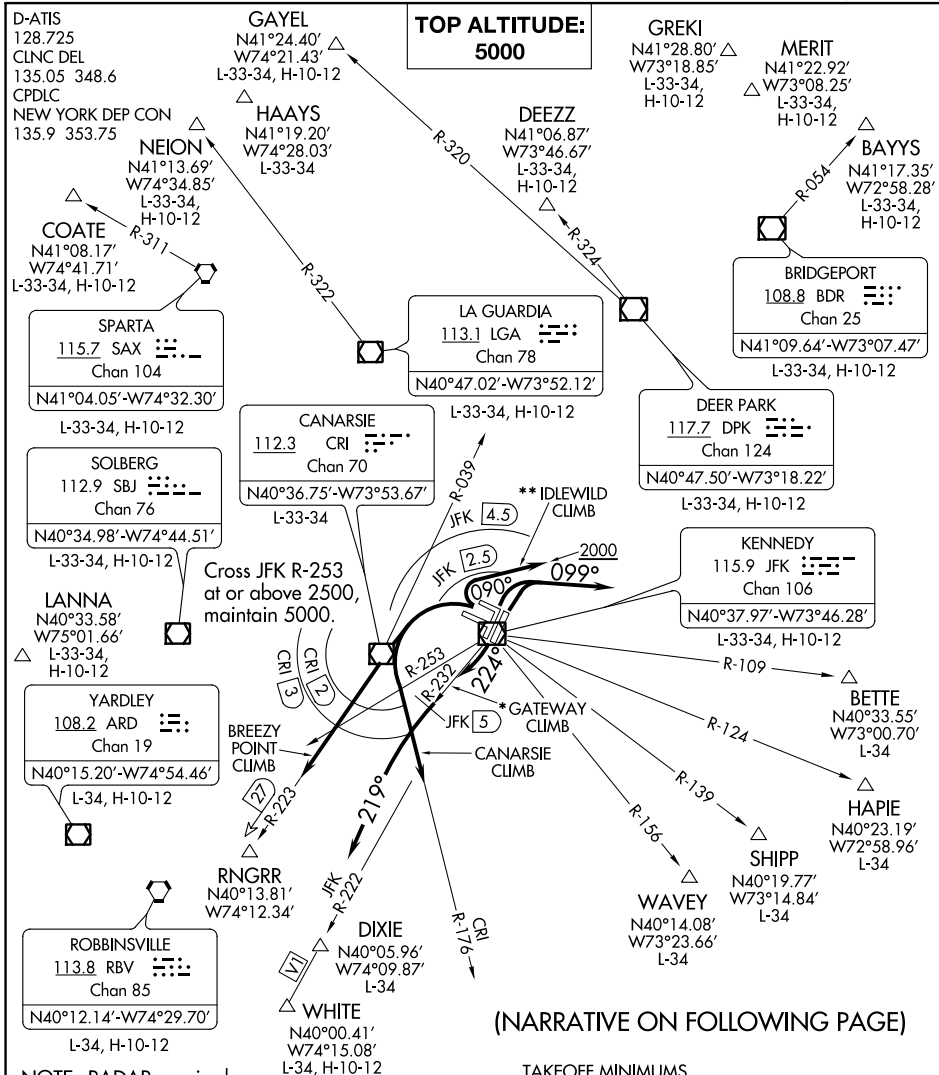
NE-2, 23 MAR 2023 to 20 APR 2023

(JFK5.JFK) 22335

KENNEDY FIVE DEPARTURE

AL-610 (FAA)

JOHN F KENNEDY INTL (JFK)
NEW YORK, NEW YORK



NE-2, 23 MAR 2023 to 20 APR 2023

NE-2, 23 MAR 2023 to 20 APR 2023

(NARRATIVE ON FOLLOWING PAGE)

- NOTE: RADAR required.
- NOTE: BAYYS departures expect vectors to BDR VOR/DME or BDR R-054.
- NOTE: BETTE departures expect vectors to JFK R-109.
- NOTE: COATE departures expect vectors to SAX VORTAC or SAX R-311.
- NOTE: DIXIE departures expect vectors to JFK R-222.
- NOTE: HAPIE departures expect vectors to JFK R-124.
- NOTE: RBV departures expect vectors to RBV after RNGRR.
- NOTE: SHIPP departures expect vectors to JFK R-139.
- NOTE: WAVEY departures expect vectors to JFK R-156.
- NOTE: WHITE departures expect vectors to V1.

TAKEOFF MINIMUMS

Rwys 4L/R, 13L/R, 22L/R, 31L/R: Standard.

*NOTE: DME required. To be assigned during the period of 2200-0700 local.

**NOTE: To be assigned to non-turbojet aircraft. If unable to remain within JFK 2.5 DME, advise ATC.

NOTE: Chart not to scale.

KENNEDY FIVE DEPARTURE
(JFK5.JFK) 19JUL18

NEW YORK, NEW YORK
JOHN F KENNEDY INTL (JFK)



DEPARTURE ROUTE DESCRIPTION

TAKEOFF RUNWAYS 4L/R: Climbing right turn heading 099°, thence

TAKEOFF RUNWAYS 13L/R: Climb on assigned heading, thence

TAKEOFF RUNWAYS 22L/R: Climb heading 224°, thence

* GATEWAY CLIMB: Climbing right turn to intercept the JFK R-232 until 5 DME, then turn left heading 219°, thence

TAKEOFF RUNWAYS 31L/R:

BREEZY POINT CLIMB: Climbing left turn direct CRI VOR/DME. Make turn east of CRI R-039 (remain within JFK 4.5 DME), then via CRI R-223 to RNGRR/CRI 27 DME. Cross CRI 3 DME or JFK R-253 at or above 2500, thence

CANARSIE CLIMB: Climbing left turn direct CRI VOR/DME. Make turn east of CRI R-039 (remain within JFK 4.5 DME), then via CRI R-176. Cross CRI 2 DME or JFK R-253 at or above 2500, thence

** IDLEWILD CLIMB: Climbing right turn to 2000 heading 090° (remain within JFK 2.5 DME), thence

. . . . via RADAR vectors to assigned route/fix, maintain 5000. Expect clearance to filed altitude/flight level ten (10) minutes after departure.

NE-2, 23 MAR 2023 to 20 APR 2023

NE-2, 23 MAR 2023 to 20 APR 2023

(SKORR5.SKORR) 22363

AL-610 (FAA)

JOHN F KENNEDY INTL (JFK)

SKORR FIVE DEPARTURE (RNAV)

NEW YORK, NEW YORK

D-ATIS
128.725
CLNC DEL
135.05 348.6
CPDLC
NEW YORK DEP CON
135.9 353.75

RNAV 1 - DME/DME/IRU or GPS required.

RADAR required.

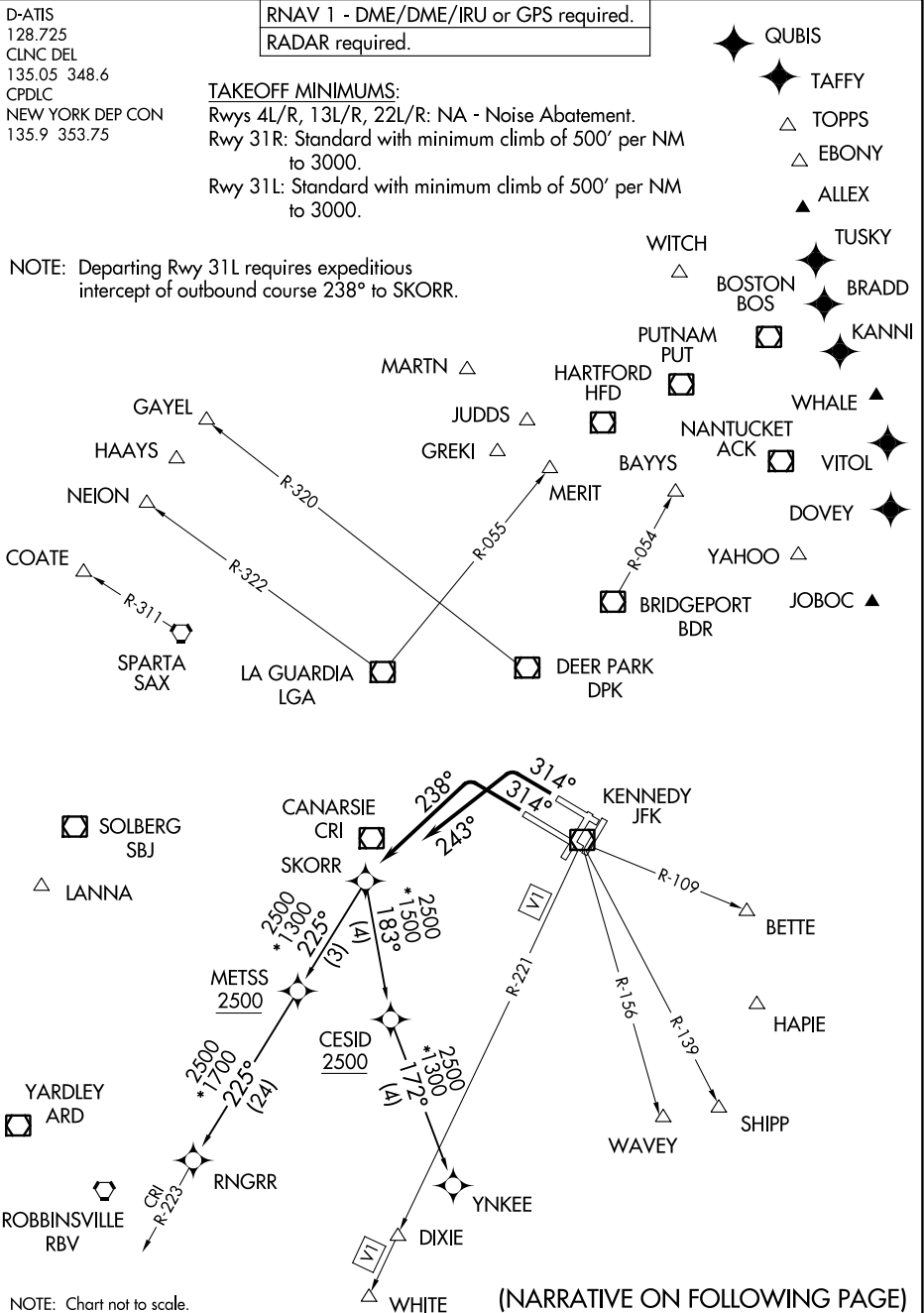
TAKEOFF MINIMUMS:

Rwys 4L/R, 13L/R, 22L/R: NA - Noise Abatement.

Rwy 31R: Standard with minimum climb of 500' per NM to 3000.

Rwy 31L: Standard with minimum climb of 500' per NM to 3000.

NOTE: Departing Rwy 31L requires expeditious intercept of outbound course 238° to SKORR.



NE-2, 23 MAR 2023 to 20 APR 2023

NE-2, 23 MAR 2023 to 20 APR 2023

NOTE: Chart not to scale.

(NARRATIVE ON FOLLOWING PAGE)

SKORR FIVE DEPARTURE (RNAV)

NEW YORK, NEW YORK

(SKORR5.SKORR) 29DEC22

JOHN F KENNEDY INTL (JFK)

SKORR FIVE DEPARTURE (RNAV)



DEPARTURE ROUTE DESCRIPTION

TAKEOFF RUNWAY 31R: Climb on heading 314° to intercept course 243° to SKORR.
Thence....

TAKEOFF RUNWAY 31L: Climb on heading 314° to intercept course 238° to SKORR.
Thence....

....maintain 5000, expect clearance to filed altitude/flight level ten minutes after departure.

RNGRR TRANSITION (SKORR5.RNGRR)

YNKEE TRANSITION (SKORR5.YNKEE)

NOTE: North American routes via....

-BETTE expect radar vectors to BETTE direct ACK VOR/DME.
-GREKI expect radar vectors to GREKI direct JUDDS direct MARTN.
-HAPIE expect radar vectors to HAPIE direct YAHOO.
-MERIT expect radar vectors to MERIT direct HFD VOR/DME then direct PUT VOR/DME then...
 -TOPPS or EBONY expect direct.
 -ALEX via direct WITCH direct.
 -TUSKY and south expect direct BOS VOR/DME direct.

NE-2, 23 MAR 2023 to 20 APR 2023

NE-2, 23 MAR 2023 to 20 APR 2023